

Project: **Telegrafan 12, Nynäshamn, 2019**



Year of implementation: **2019**
Building: **Telegrafan 12**
Town: **Nynäshamn, Sweden**
Architecture: **BuildX**
Investor: **AB Nynäshamnsbostäder**

Type of works performed by Alu alprem:
Entrance doors
Display windows
Fire-resistant elements

Materials:
Schüco AWS/ADS 75.SI
Schüco ADS 65.NI/80 FR30 E30
Assa Abloy SW 300

Key words:
Distance of 2000 km
First project in Sweden
Ud=1,5 W/m²K



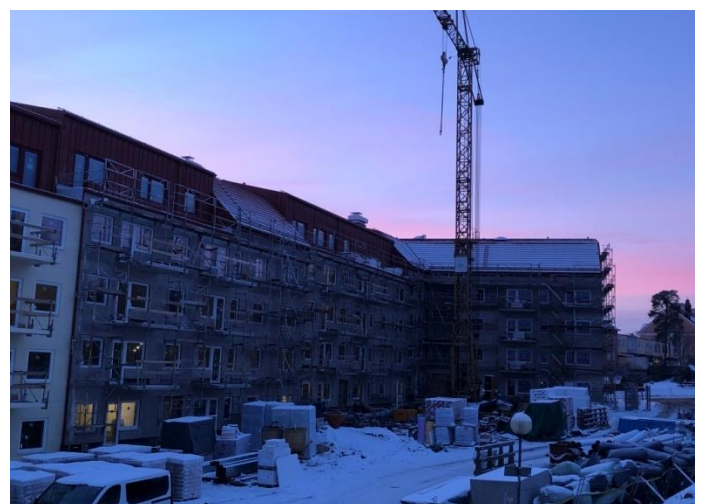
50 km to the south of Stockholm, 94 apartments were built in the town of Nynäshamn. Nynäshamn is very popular with the Swedes due to their mild climate as it is located at the Baltic Sea coast.

We constructed all aluminium structures and glazed elements at the building: entrances, display windows and fire-proof elements. For Alu alprem, this was the first project in Sweden. For all installed elements, we had to harmonise and submit the required technical documentation.

The project presented a special logistical challenge. The building is 2000 km away from Kamnik and we had to organise transport on road and by sea. Construction works progressed based on the actual state at the building and theoretically based on plans. All elements were brought to the construction site with only one transport.

We produced all elements and installed them according to RAL standards.

Further references: [here](#).



ALU ALPREM, d.o.o.

Ljubljanska cesta 15, SI-1241 Kamnik

T: +386 (0)1 831 15 11

F: +386 (0)1 831 35 01

info@alprem.si

www.alprem.si